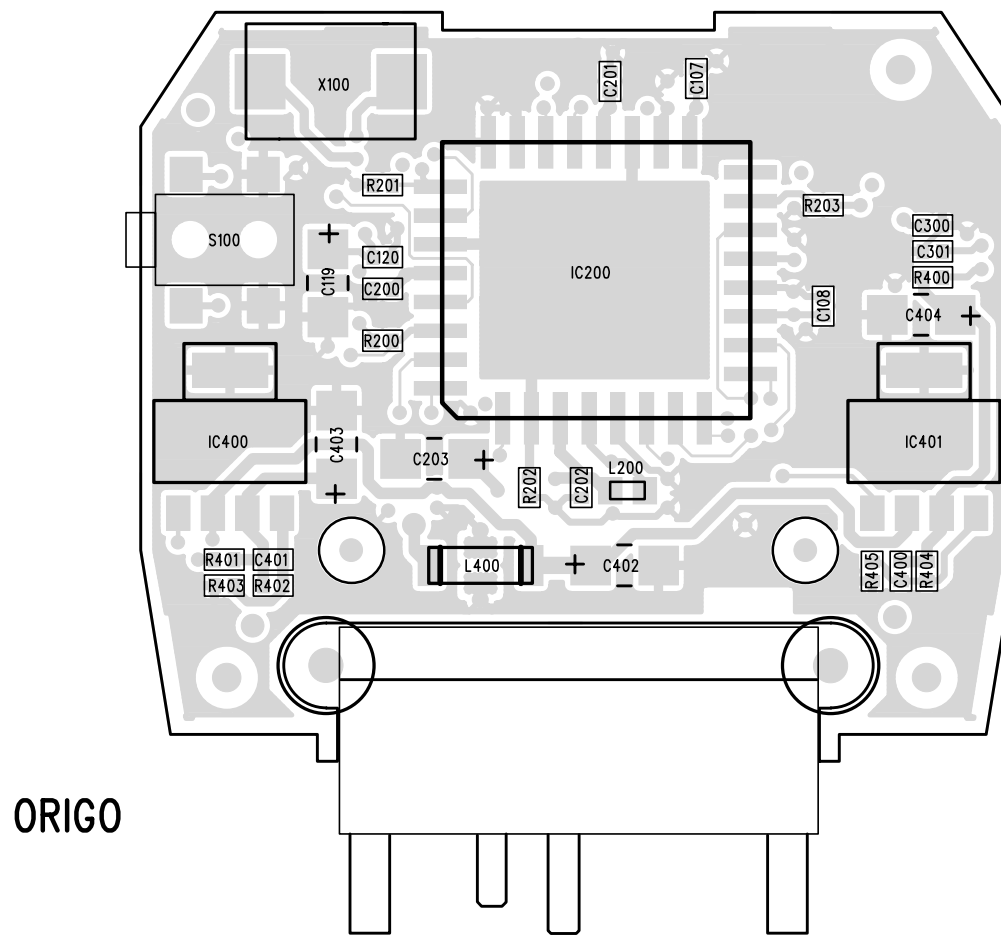


C-TECHNOLOGIES AB SWEDEN. OSKAR MCA-10 33-EP151022-C (REV C) (20)
 LEGEND/POSITION PRINT PRI DEC22, 2000



ORIGO

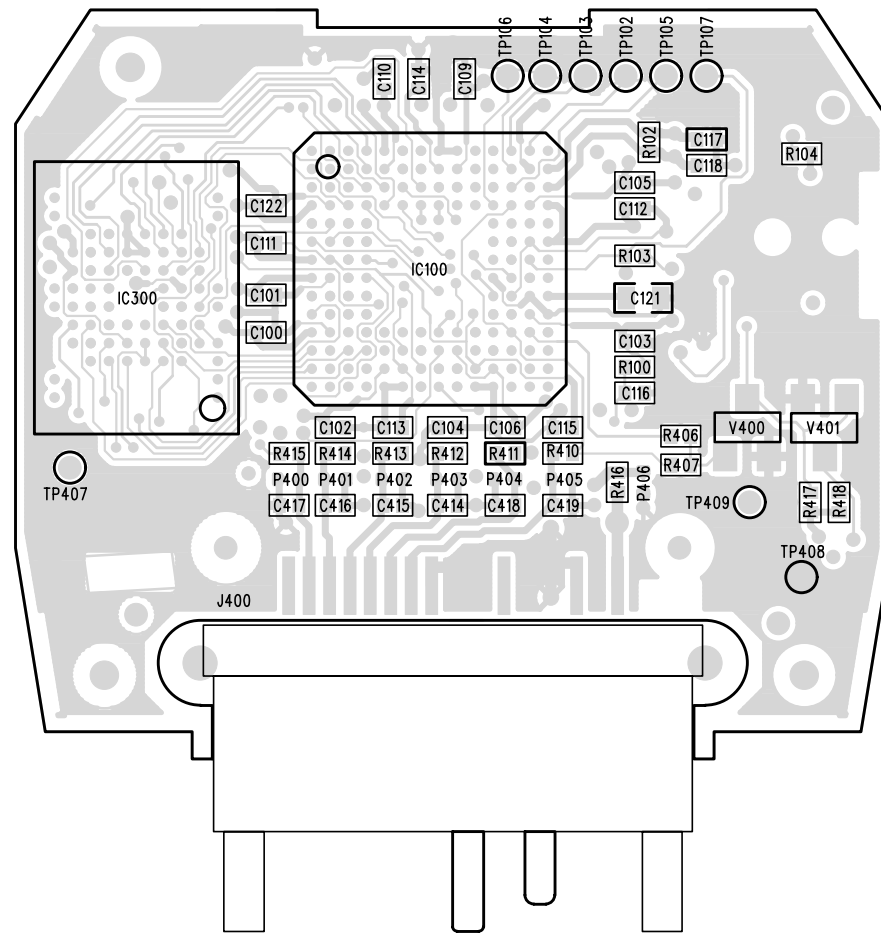
APPENDED DOCUMENTS

	Rev	Files
<input checked="" type="checkbox"/> X-Y Coordinates	C	XY35-EP151022-C.XLS
<input type="checkbox"/> Testpoint / Testfixture		
<input type="checkbox"/>		
<input type="checkbox"/>		

	NAME:	OSKAR MCA-10	PART No:	33-EP151022-C	REV:	C
			DATE:	DEC 22, 2000	DES:	LP
			SHEET:	1 OF 2	APPR:	

This drawing contains confidential information and is the property of C Technologies AB, Lund, SWEDEN without whose permission it may not be copied, shown or handed to a third party or otherwise used, and it is to be returned promptly upon request to C Technologies AB

C-TECHNOLOGIES AB SWEDEN. OSKAR MCA-10 33-EP151022-C (REV C) (21)
 LEGEND/POSITION PRINT SEC DEC22, 2000

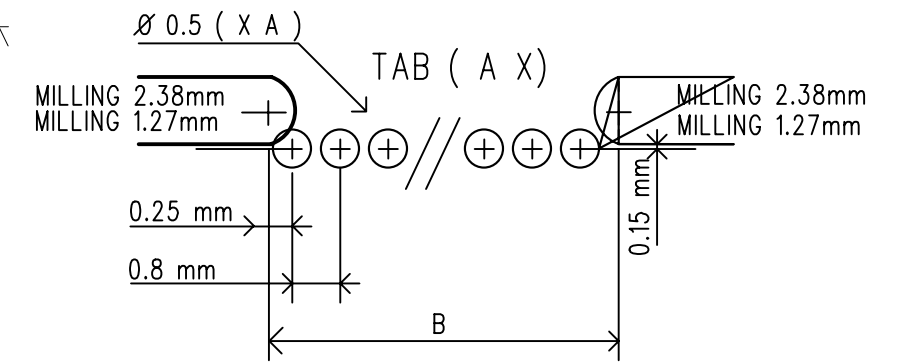
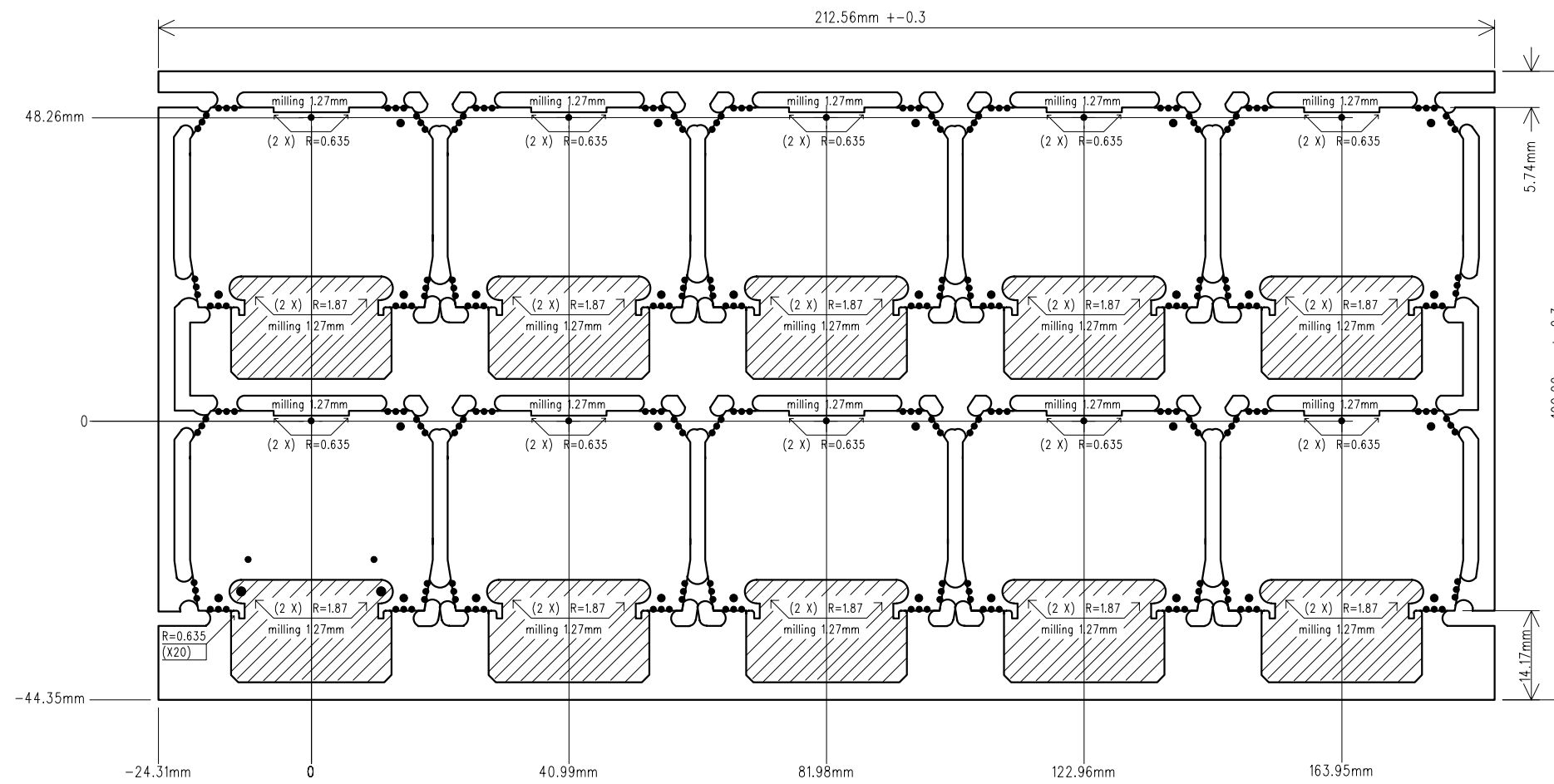


ORIGO

This drawing contains confidential information and is the property of C Technologies AB, Lund, SWEDEN without whose permission it may not be copied, shown or handed to a third party or otherwise used, and it is to be returned promptly upon request to C Technologies AB

	NAME:	OSKAR MCA-10	PART No:	33-EP151022-C	REV:	C
			DATE:	DEC 22, 2000	DES:	LP
			SHEET:	2 OF 2	APPR:	

VIEW FROM PRIMARY SIDE



	Mark	Qty	A	B
ALL	A1	80	5	3.7 mm
	A2			
	A3			
	A4			
	A5			

Step tolerance = ±0.15 mm

This drawing contains confidential information and is the property of C Technologies AB, Lund, SWEDEN without whose permission it may not be copied, shown or handed to a third party or otherwise used, and it is to be returned promptly upon request to C Technologies AB

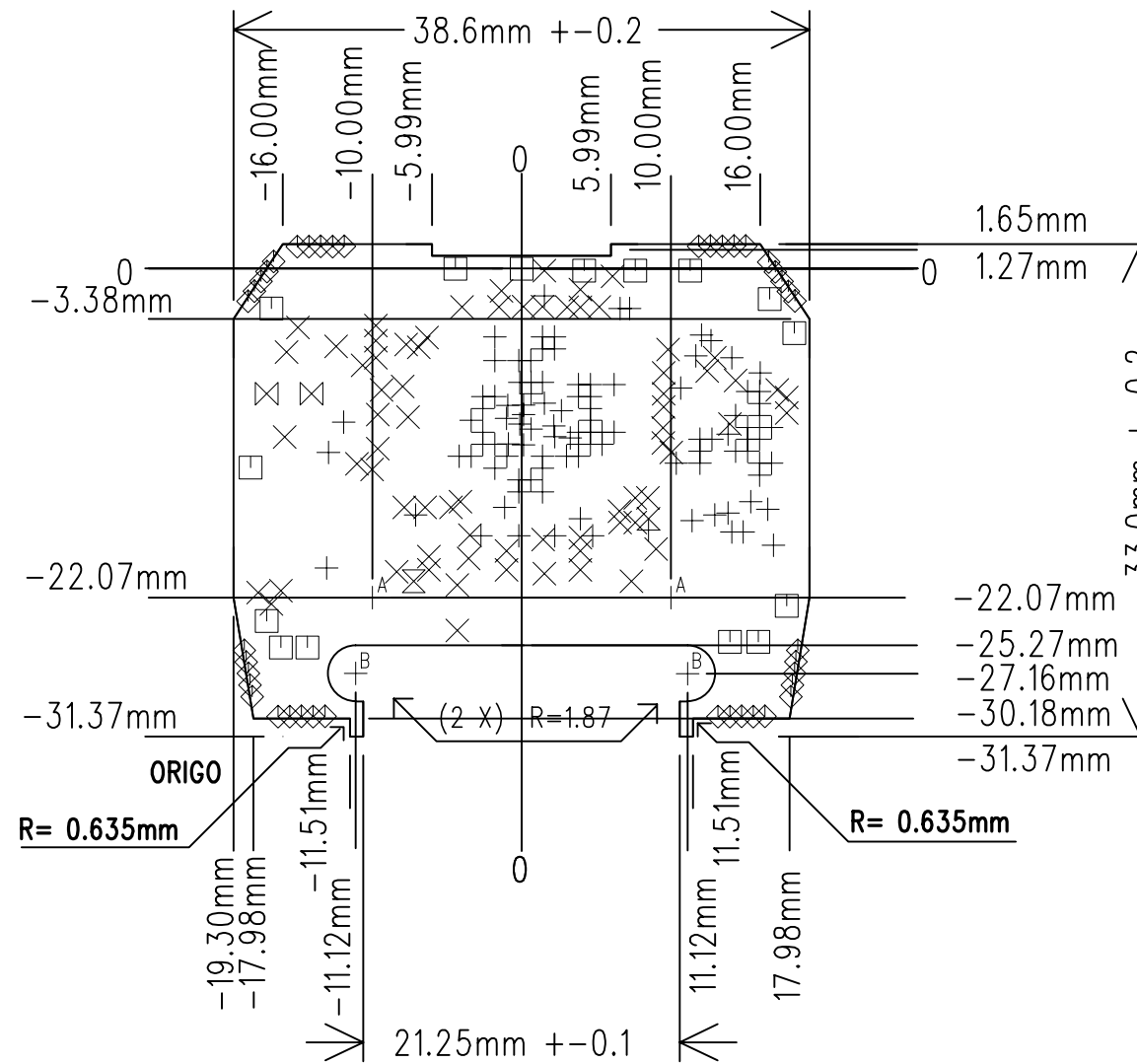
	NAME:	OSKAR MCA-10	PART No:	ET151040-C	REV:	C
			DATE:	DEC 22, 2000	DES:	LP
			SHEET:	2 OF 4	APPR:	

VIEW FROM PRIMARY SIDE

VIA 1 blind Layer 6-5
VIA 2 Through

DRILLSIZE mm	PAD OUTER mm	PAD INNER mm
0.2	0.45	0.45
0.3	0.6	0.7

C-TECHNOLOGIES AB SWEDEN. OSKAR MCA-10 ET151040-C (REV C) (31) DRILL DRAWING DEC22, 2000



Other measure = tolerance +/- 0.15

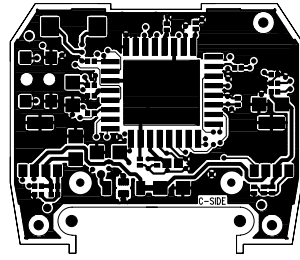
■ PCB Designed for automatic insertion Type:C = Component V = Via S = Control O = Other B = Breakout holes

Marking	Qty	Diameter mm	Plated through yes no	Tolerance mm	Type	Marking	Qty	Diameter mm	Plated through yes no	Tolerance mm	Type
T1	+	106	X	+0.1 - 0.05	V 1	T10					
T2	×	72	X	+0.1 - 0.05	V 2	T11					
T3	□	15	X	+0.1 - 0.05	C	T12					
T4	◇	40		+0.1 - 0.05	B	T13					
T5	⊗	1	X	+0.1 - 0.05	C	T14					
T6	⊗	2		+0.1	C	T15					
T7	A	2		+0.1 - 0.05	S	T16					
T8	B	2		+0.1 - 0.05	O	T17					
T9						T18					

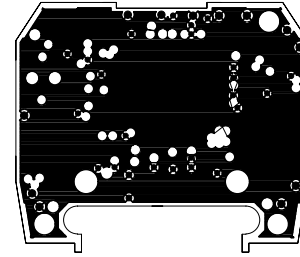
NAME: OSKAR MCA-10		PART No: ET151040-C	REV: C
		DATE: DEC 22, 2000	DES: LP
		SHEET: 3 OF 4	APPR:

This drawing contains confidential information and is the property of C Technologies AB, Lund, SWEDEN without whose permission it may not be copied, shown or handed to a third party or otherwise used, and it is to be returned promptly upon request to C Technologies AB

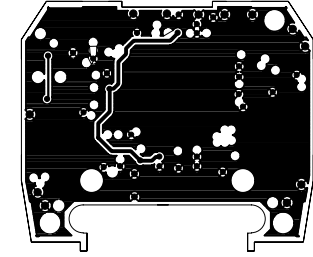
C-TECHNOLOGIES AB SWEDEN. OSKAR MCA-10 ET151040-C (REV C) (10) LAYER PRI GND AGND DEC22, 2000



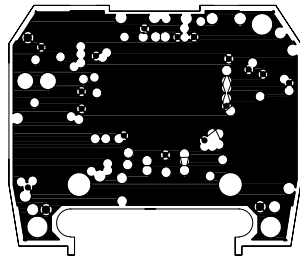
C-TECHNOLOGIES AB SWEDEN. OSKAR MCA-10 ET151040-C (REV C) (12) INNER 1 GND DEC22, 2000



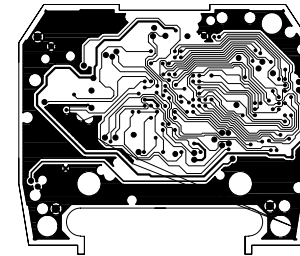
C-TECHNOLOGIES AB SWEDEN. OSKAR MCA-10 ET151040-C (REV C) (13) INNER 2 SIG GND DEC22, 2000



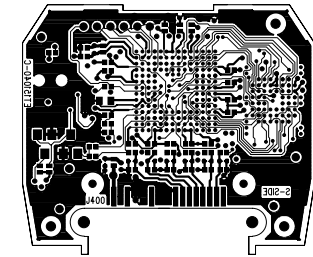
C-TECHNOLOGIES AB SWEDEN. OSKAR MCA-10 ET151040-C (REV C) (14) INNER 3 +3.3V DEC22, 2000



C-TECHNOLOGIES AB SWEDEN. OSKAR MCA-10 ET151040-C (REV C) (15) INNER 4 SIG +3.3V +2.5V DEC22, 2000



C-TECHNOLOGIES AB SWEDEN. OSKAR MCA-10 ET151040-C (REV C) (11) LAYER SEC SIG GND DEC22, 2000



This drawing contains confidential information and is the property of C Technologies AB, Lund, SWEDEN without whose permission it may not be copied, shown or handed to a third party or otherwise used, and it is to be returned promptly upon request to C Technologies AB

	NAME: OSKAR MCA-10		PART No: ET151040-C	REV: C
			DATE: DEC 22, 2000	DES: LP
			SHEET: 4 OF 4	APPR: